

July News



Sarah Carlisle Towery ALABAMA ART COLONY



2023 ARTIST'S RETREAT

November 3-7, 2023

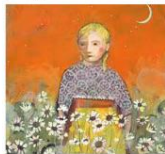
Children's Harbor • Lake Martin, Alabama



Aline Ordman
Oils



Working plein air or from their own photo references, Aline's students will transform these into oil paintings using the principles of color and design. Along with daily painting demonstrations, Aline will emphasize the understanding of color in terms of temperature, intensity and value while translating those ideas using paint. Let's say goodbye to overworked light paintings and learn to create loose, bold, but still illustrative work.



Judy Verhoeven
Mixed Media

In Judy's class - Mixed Media Mashup - students will incorporate acrylic painting, collage using your own painted papers, pattern-making, transfers, mark-making with common objects, and drawing - all together in one piece. Composition and color choice will also be covered.



Pat Butynski
Acrylic & Mixed Media



Join Pat in her workshop "Path to Abstraction." She will clarify the abstract creative process using the elements of design, a simple palette and an intentional plan to build a well-designed abstract painting. This class is great for those who are transitioning from subjective to objective work and for those who are already painting abstractly. It will help them to see and develop the language of abstract art for themselves.

For more information and registration, visit www.AlabamaArtColony.org
Room, Meals & Instruction
Register early to lock in these rates! \$750 Semi-Private Room • \$850 Private Room

Some of the classes are filling up fast! Join us for a fabulous opportunity to learn new techniques

and study with other artists from the region! This artist's retreat has taken place for about 32 years now and we hope that we can continue this popular art tradition. Please register today on our website!

ALABAMA ART COLONY
"ARTIST'S RETREAT"
CHILDREN'S HARBOR, LAKE MARTIN
NEW DATES THIS YEAR!!
FRIDAY, NOV 3 TO TUESDAY, NOV 7, 2023
MAY BE COOLER BUT LOTS MORE COLORFUL!!

CHOOSE ONE OF THESE INSTRUCTORS.....
PAT BUTYNSKI
ALINE ORDMAN
JUDY VERHOEVEN



FOR MORE INFORMATION
ABOUT
ALABAMA ART COLONY
CONTACT.....
SHARON MADDOX
AT 256-391-5467
OR STACY RANDLE
AT 334-399-1090

SEMI PRIVATE \$750 OR PRIVATE \$850
INCLUDES INSTRUCTION, ROOM, MEALS
& GREAT FELLOWSHIP!!

REGISTER FOR ALABAMA ART COLONY
ON OUR WEBSITE
[HTTPS://WWW.ALABAMAARTCOLONY.ORG](https://www.alabamaartcolony.org)



**JUDY VERHOEVEN
MIXED MEDIA PAPER COLLAGE**

If you like to jump from one medium to the next, Judy's Mixed Media Mashup will tickle your fancy! In this class, we will incorporate acrylic painting, collage using our own painted papers, pattern making, transfers, mark-making with common objects, and drawing — all together in one piece. Composition and color choice instruction, too.





OILS WITH ALINE ORDMAN

Working plein air or from their own photo references,

Aline's students will transform these into oil paintings using the principles of color and design. Along with daily painting demonstrations, Aline will emphasize the understanding of color in terms of temperature, intensity and value while translating those ideas using paint. Let's say goodbye to overworked tight paintings and learn to create loose, bold, but still illustrative work.



Aline Ordman

OIL PAINTING SUPPLY LIST

I use Water Mixable oils but traditional oils are fine if you use them. Please use odor free solvents with them like Gamblin

Holbein Duo Water Mixable Oil Paints are great as are Cobra.

I have discovered Lucas Water Soluble oils as well and they are less expensive but not nearly the same quality. Windsor Newton Artisan are not good at all.

My Palette: Keep in mind that if you have a palette you like, you don't need to use my colors but make sure you have warm and cool colors and light and dark values.

Alizarin Crimson
Rose Madder
Ultramarine Blue
Cerulean or Verditer Blue or King Blue (Cobra makes this color)
Sap Green
Burnt or Raw Umber
Cadmium Red Hue (the hues are much cheaper)
Cadmium Yellow Deep Hue (which is orange)
Cadmium Yellow Hue
Cadmium Yellow Light Hue
Yellow Ochre
Jaune Brilliant
White

Optional Colors I love:

Lavender
Lilac
Horizon Blue
Coral

I think Coral, Lavender and Lilac are easy to mix, Horizon Blue is tougher

One Acrylic color to tone canvases..I like Raw Sienna or Venetian Rd but it's your choice

If your brushes seem okay, use them. I use Rosemary Ivory brushes and I like the long filberts...size 0, size 4 or 6 and size 8 or 10, one dagger brush 34" should do it. You can order them on line at their site <http://www.rosemaryandco.com>

For travelers: If this is a traveling trip, especially plein air, then get oil panels rather than canvases and keep them manageable in size...8 x 10, 9 x 12, 11 x 14. I recommend Ray Mar, Centurion Deluxe Oil Primed Linen Panels, and there are others. For carrying the panels, Ray Mar makes lightweight carriers that are sized to the size of your panels. www.raymarart.com

For figure painting workshops if's nice to use paper for quick studies. I like using Artagain toned paper or canvas paper. Artagain can usually be found on line. Canvases or large panels are recommended for figure; 12 x 16, 16 x 20 and 18 x 24 are all good sizes.

I use a Strada or Easy L easel which is essentially a box that gets mounted to a tripod. However, it's about \$250 and probably not worth it unless you intend to keep this up. So, I'd get a cheap, light easel and hope it isn't too windy. If you aren't doing a lot of outside painting, an inexpensive Stanrite easel will do well.

Any questions email me: oordman@sover.net